

Supporting Research in a Difficult Era

Panelists

- Christopher McCord, Dean, College of Liberal Arts & Sciences, Northern Illinois University
- Ed Sankowski, Associate Dean, College of Arts & Sciences, University of Oklahoma
- Christa Slaton, Dean, College of Arts & Sciences, New Mexico State University

A Difficult Era

- States have defunded higher education
- What state funding remains is increasingly focused on productivity measures
- Research is increasingly defined as funded research
- After a brief period of ARRA funding, federal funding for research is contracting

How do we support research
in this environment?

How about ever more of us chase ever
harder for ever fewer federal dollars?

How about we each try to come up
with at least one other plan?

Other Options

Some examples of ways to support research:

- Supporting Applied Research & Engagement
- Promoting Interdisciplinary Research
- Integrating Research & Educational Missions
- Developing Partnerships

Note that these are very much overlapping options.

International Supporting Applied
Research & Engagement
Promoting Interdisciplinary Research

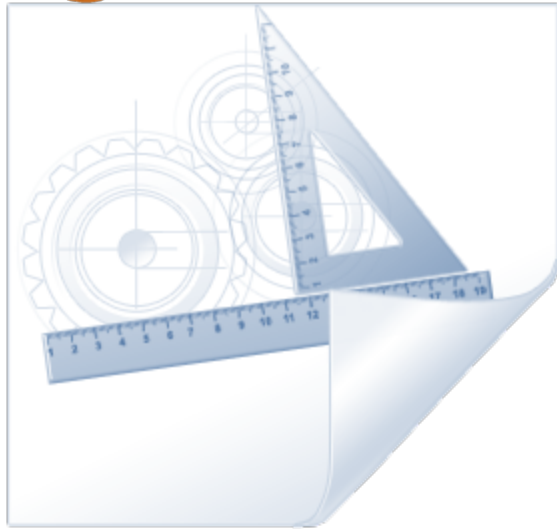
Christa Slaton, Dean, College of Arts & Sciences,
New Mexico State University

Promoting Research as Building a House



1. Creating a Blueprint
2. Laying the Foundation
3. Constructing the Framework
4. Making it a Home
5. Settling In

1. Creating a Blueprint



University's Vision Statement:

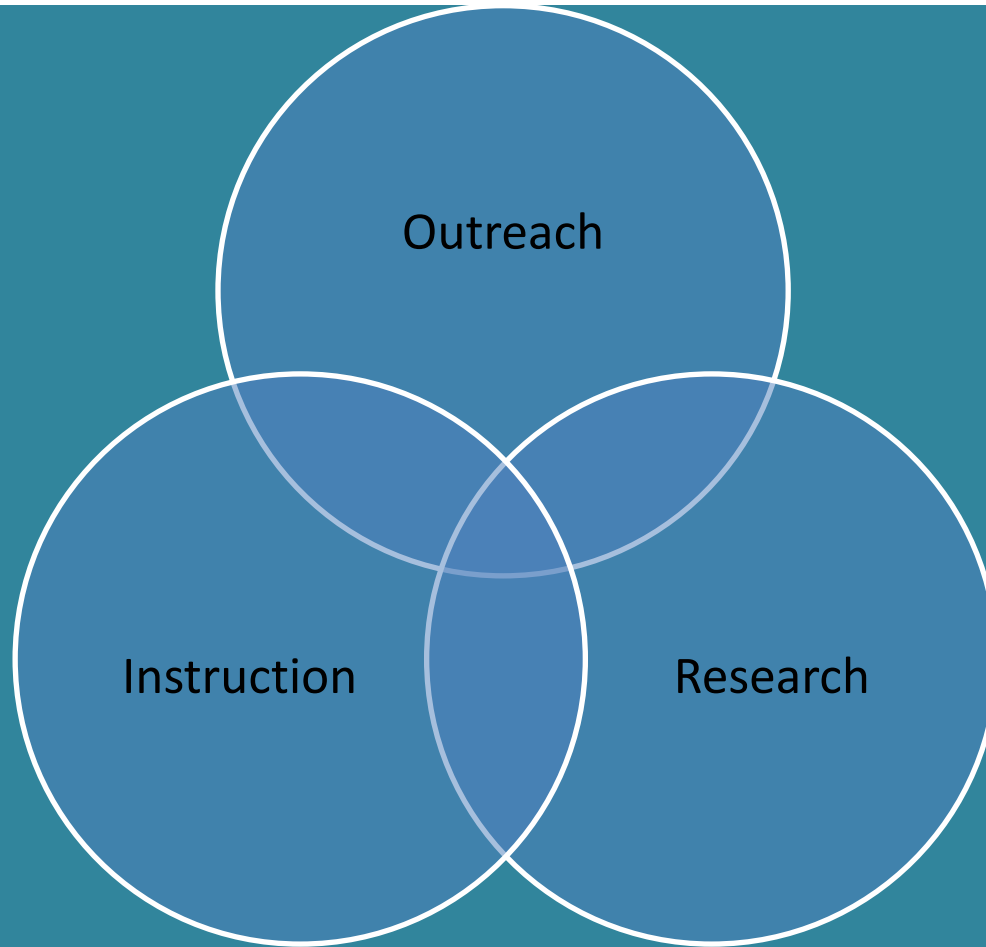
“Central to all of its functions will be the university's historic commitment of **service** to all Alabamians as the State becomes a part of a global society with all of its challenges and opportunities.”

2. Laying the Foundation

- University Mission Statement
- Auburn Creed
- Faculty Handbook
- Strategic Plan
- Service Learning Task Force



University Mission: Outreach – Instruction - Research



University Mission

- University's mission is defined by traditions of service and access.
- University will emphasize broad and superior undergraduate education that imparts knowledge, skills, and values so essential to educated and responsible citizens.



Faculty Handbook



“Outreach refers to the function of applying academic expertise to the direct benefit of external audiences in support of university and unit missions.”



Faculty Handbook

Outreach scholarship requires all the following conditions be met:

- There is a substantive link with significant human needs and societal problems, issues, or concerns
- There is a direct application of knowledge to significant human needs and societal problems, issues, or concerns
- There is use of the faculty member's academic and professional expertise
- The ultimate purpose is for the public or common good
- New knowledge is generated for the discipline and/or the audience or clientele
- There is a clear link/relationship between the program activities and an appropriate academic unit's mission

3. Constructing the Framework



- Community and Civic Engagement Planning Committee
- Summer Academy
- Martha's Vineyard Summer Institute
- Collaborating with Community Partners



Community and Civic Engagement Planning

AUBURN
UNIVERSITY

Departments

People

Content For:

Give Online

News

Event Calendar

Search **GO**

[Home](#)
[Mission](#)
[Faculty Planning Committee](#)
[Engaged Scholars](#)
[Summer Academy](#)
[Learning Communities](#)
[LBAR 3910](#)
[Scholarship](#)
[Minor in Community and Civic Engagement](#)
[Community Partners](#)
[Photo Gallery](#)

COLLEGE OF LIBERAL ARTS
Community & Civic Engagement
Find Your Place





KELLY NELSON
SOPHOMORE
PSYCHOLOGY

"The service-learning opportunity I received as a sophomore enrolled in Developmental Psychology (PSYC 2120) was exactly what I needed to understand the talents, abilities, and demands required of the profession. Dr. Elaine Frieda-Siepmann's course required each student to perform three weekly hours of volunteer work at a local hospice, hospital,

CCE News Stories ▶
[Slaton to Present at International Symposium on Service-Learning in Greece](#)

[College Welcomes Distinguished Alum Daniel Meador \('49\)](#)

[CLA Engaged Scholar and Doctoral Candidate Help Kiwanians Play](#)

[more CCE news >](#)

[Questions about this page](#)
November 19, 2009

Special Focus ▶


[more special focus items >](#)

Calendar ▶
[Performance: "Brighton Beach Memoirs"](#)
11/13/09 - 11/20/09
[Auburn Social Work Club Collects Toys and Cash Donations](#)
11/16/09 - 11/20/09
[Nomination Deadline for WLI Leadership Training Program](#)
11/30/09
[more calendar events >](#)

Summer Academy

- Provided faculty with an introduction to civic engagement, outreach scholarship, and service-learning.
- The week-long training brought faculty members from a variety of departments together in a manner that promoted cross-discipline collaboration.
- Faculty received a stipend for their participation, and they agreed to incorporate engaged practices into an existing course during the following academic year.



Martha's Vineyard Summer Institute



Our Goal...



Promote a culture of engagement through experiential education whereby faculty, students, and community partners participate in meaningful collaborations and and shared knowledge that can be broadly dissiminated.

Our Objectives...

- Strengthen our collaboration as an advocacy group to promote experiential education.
- Create awareness of the value of engagement through experiential education.
- Create a link between faculty engagement and student engagement initiatives.
- Create collaborative research teams to promote scholarship.

How We Evaluate...

We systematically address these questions:

- Did we keep the group together?
- Did we accomplish our collaborative projects?
- Did we create an assessment plan?

Developing Relationships with Community Partners

- Finding Partners
- Linking Students to Partners



Collaborating with Community Partners

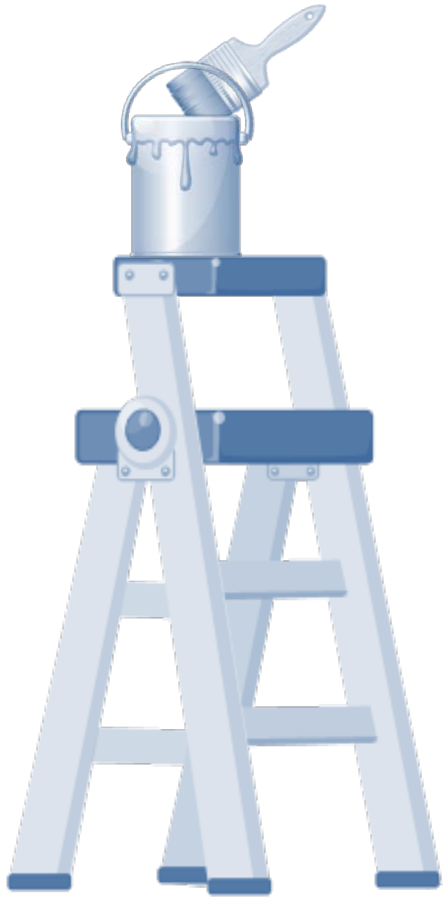
- Reciprocity with Partners
- Assessing Partnerships
- Sustaining Partnerships



Learning From Your Engaged Partner



4. Making it a Home



- Learning Communities
- Civic and Community Engagement Minor
- Alternative Spring Break
- Youtube Contest

Learning Communities



AUBURN
UNIVERSITY

2009 Learning
Communities
2010 Learning Community
Proposal Form
LC Coordinators
Parents
Frequently Asked
Questions
Contact
2009 LC Brochure



Check out Learning
Communities on YouTube!

AU Learning Communities
200 Cater Hall
Auburn, AL 36849
(334) 844-5972
lc@auburn.edu

Click below for the 2009-
2010 First Year Calendar



[A to Z Index](#) [Campus Map](#) [People Finder](#) [Search](#)

LEARNING AND LIVING-LEARNING COMMUNITIES

Where Belonging Begins!

[AU Homepage](#) > [Undergraduate Studies](#) > [Learning Communities](#)

Welcome!

We are thrilled that you are interested in Auburn University's Learning Communities and are happy to answer any questions you have. Our 2009 Learning Communities are currently full. In fall 2009, we will be posting more information about our available Learning Communities for 2010. Please come back and visit for more information then and if you come to War Eagle Days we hope you will visit us at our presentation.



**Welcome to Learning Communities
at Auburn University!**

Make your freshman year the best it can be through Learning Communities! LCs allows students to start off on the right foot through pre-registered classes, supportive professors, and optional social events. We offer several types of Learning Communities in

**Upcoming Events for Learning
Communities**

**Learning Community Interest
Session**

Monday, August 24 at 3:00pm
Student Center Room 2216

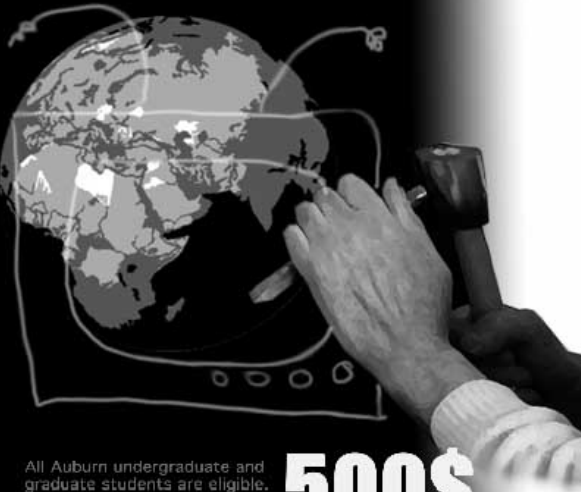
Civic and Community Engagement Minor

The Community and Civic Engagement Minor is a rigorous, interdisciplinary academic program of active learning that provides undergraduate students with the opportunity to integrate coursework with a diversity of local and global community and public experiences.

Alternative Spring Break



Youtube Contest



Civic Engagement YouTube Contest

All Auburn undergraduate and graduate students are eligible.

One video per person or group
Submit videos to: Christa Slaton,
Associate Dean College of Liberal Arts
at slatocd@auburn.edu

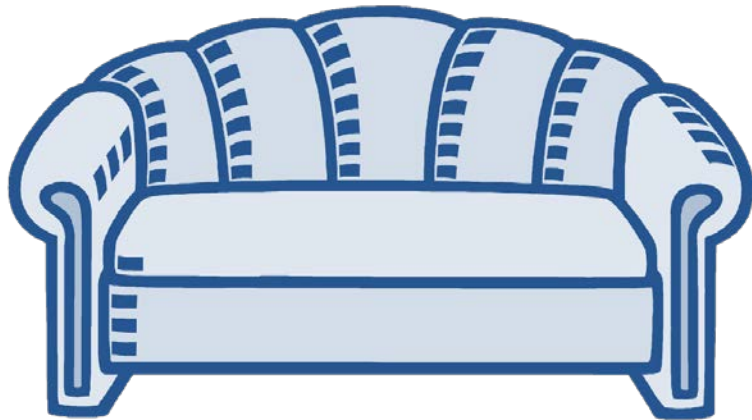
Deadline for submission March 27th
Video length 1 to 5 minutes

Guidelines and contest information found at:
<http://www.cla.auburn.edu> or Haley 2238

Sponsored by Auburn University's
College of Liberal Arts

500\$
250\$
150

5. Settling In



- Engaged Scholars
- Community and Civic Engagement Fellows

Engaged Scholars

- Designed to support superior faculty in the college and to strengthen student and faculty engagement in the local community as well as nationally and internationally
- Chosen faculty members will hold the title of Engaged Scholar for a three-year appointment and will receive an annual supplement of \$5,000 to promote their outreach and scholarship
- Engaged Scholars selected based on exemplary professional citizenship and participation in promoting the college's commitment to civic engagement.



Civic and Community Engagement Fellows

- Each Fellow is assigned a faculty mentor and a unique research project working to advance the college's Community and Civic Engagement Initiative.
- The Fellowship awards \$1,000 to undergraduate students and \$1,500 to graduate students for the academic year.



Building Scholarship from Outreach Efforts: Research and Teaching-- a Symbiotic Relationship

Outreach Template

prepared by Christa Slaton, Associate Dean, College of Liberal Arts 2009

Part I: *Reflective Commentary on the candidate's outreach program or programs*

- Intended to *highlight* and *explain* the candidate's most significant contributions
- A program is a set of activities that share a *common focus* and depend upon a *particular expertise*
- No more than 5 pages (single-spaced) **Contrast with teaching philosophy**

a. *Description*

- Provide brief overview of:
 - needs addressed o objectives
 - methods
 - target audience
- Describe selected activities from Part II that are most illustrative of the candidate's contribution to this program. Include example in portfolio.

b. *Mission*

- Indicate how the program was compatible with university and unit mission.

c. *Scholarship*

- Describe the role of the candidate's *professional expertise* in the design and execution of the program.
- Describe how the activities:
 - applied the *candidate's discipline* to the needs of society
 - required *integration with other disciplines*, and/or
 - generated new knowledge for the discipline and/or audience
- Indicate how the program led to increased recognition of the candidate's *professional expertise* by external audiences. Indicators should include:
 - requests for information
 - invitations to make presentations
 - service on review panels
 - receipt of contracts, grants, and professional awards, etc.

How Is Our
Evaluation

Lessons Learned from Outreach Projects

- Four examples:
 - **Televote**
 - **Community Mediation Service**
 - **Uniontown Cares**
 - **Election Administration**

Uniontown Cares - Outreach



- Economic Development in the Black Belt of Alabama
- Civic Building
- Bridging the Racial Divide
- Developing partnerships between citizens, government, and the university

Uniontown Cares - Instruction

- Graduate Seminar in Administrative Leadership and Democratic Governance
- Student Projects
 - Oral History
 - Creation of Alcoholics Anonymous
 - Health Fair
 - Book Drive for Public Library
 - Web Design for City and Uniontown Cares
 - Photo Exhibit
 - Arbor Day
 - Clean Up of Former Slave Cemetery

Uniontown Cares - Research

- Kettering Grant
- Reports and Visits to Kettering
- Conference Presentations
- Book Chapter
- Keynote Address
- Journal Article
- Kettering Grant Obtained for Engage Scholars without Applying

Academic Journals that Publish Peer-reviewed Articles on Outreach



*Journal of
Higher Education
Outreach
& Engagement*

Journal of Community Engagement
and Higher Education

THE JOURNAL FOR CIVIC COMMITMENT ©



GATEWAYS
International Journal of Community Research & Engagement

Organizations and Conferences



10th Annual
National **Outreach** Scholarship Conference



Campus Compact

America *Imagining*

Artists and Scholars in Public Life

Outreach – the Snowball Effect



It takes time to build, but it's growth
and impact can be immense.....



International Partnerships

Christopher McCord, Dean,
College of Liberal Arts & Sciences,
Northern Illinois University

Engagement & Partnerships

Leveraging external partnerships in

- Anthropology
- Environmental Studies & Hydrogeology
- Geography
- NGO Leadership & Development
- Public Administration

Facilitating Units

- Center for Latino & Latin-American Studies
- Center for Southeast Asian Studies

Engagement & Partnerships

Field station in the Yucatan Peninsula

Joint with Centro de Investigación Científica de
Yucatán

One component of an NSF REU

Program sends students to this field
station

Partially funded by Mexico's
CONACYT



Engagement & Partnerships

Conflict Resolution in Mindanao

- NIU cultural anthropologist Susan Russell studies conflict resolution and works with activists
- Projects bring young Filipino leaders to the US
- Funded by the US Dept. of State
- Connects NIU to numerous NGO's in the Philippines



Engagement & Partnerships

Public Health in Indonesia

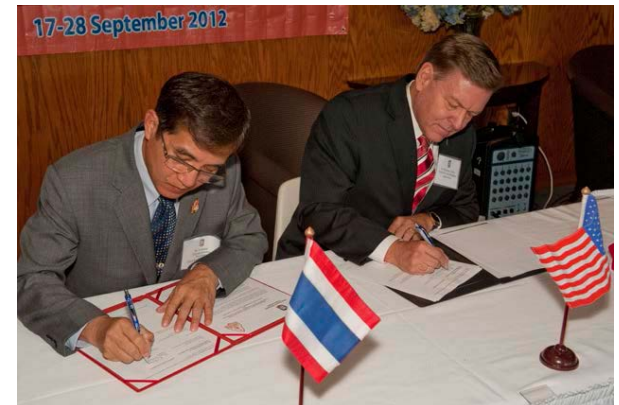
- Project studies impact of environmental factor on children's health in Makassar, on the island of Sulawesi in Indonesia
- Involves NIU faculty from Public Health and Geography (GIS)
- Grew out of NIU's involvement in the Indonesia Partnership Program organized by IIE.



Engagement & Partnerships

Public Administration in Thailand

- Local Thai governments still must adapt to the country's (slow) move to decentralization.
- NIU has been partnering with the National Institute for Development Administration (NIDA) in Bangkok and Khon Kaen University to study the needs of local governments
- Developed a proposal for a local government academy



Observations

- **Most of our projects have been in the social sciences**
- **Most of our projects have an aspect of applied research – our partners are still developing their research capacities**
- **International partnerships take time**
- **International partnerships require cultural awareness**

Integrating Research & Educational Missions

Ed Sankowski, Associate Dean, College of Arts &
Sciences, University of Oklahoma

Note: Ed read prepared remarks, but did not have a powerpoint presentation.